

FEKAFOS 280 DOUBLE

AUTOMATIC STATIONS FOR COLLECTING AND LIFTING WASTE WATERS



Automatic collection and lifting stations, used for collecting and pumping civil and industrial waste water in sewers.

Comprises a high density 280 litre polythene tank with removable cover complete with a watertight and gastight seal. Complete with two lifting devices (DSD2) for making pump maintenance easier. Fitted for two non-automatic electric pumps (**FEKA 600 M-NA - FEKA 700 M-NA - FEKA 800 M-NA**) to be ordered separately. Complete with: 3 bulb floats mounted on a stainless steel support, cable holder for connecting the float and pump cables to the electrical panel (**to order separately according to the table**).

Complete with DN50 and DN110 suction manifolds and 2" delivery manifolds. Complete with connector for DN50 vent tube. An alarm float can be used on request.

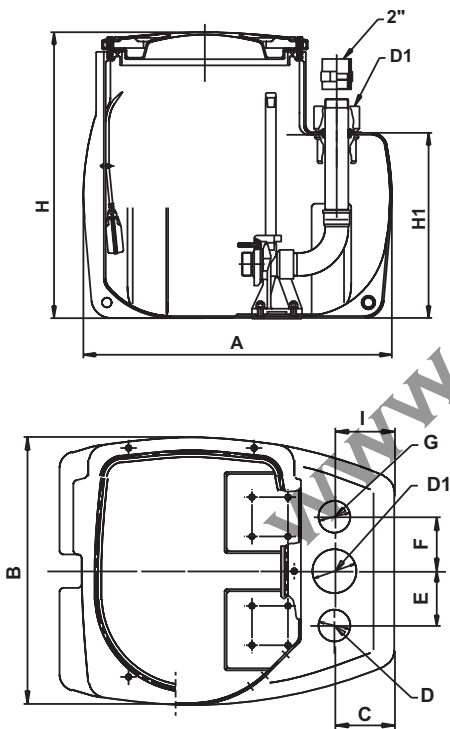
Operating range: from 1 to 24 m³/h with a head of up to 9 m

Liquid temperature range: +50°C

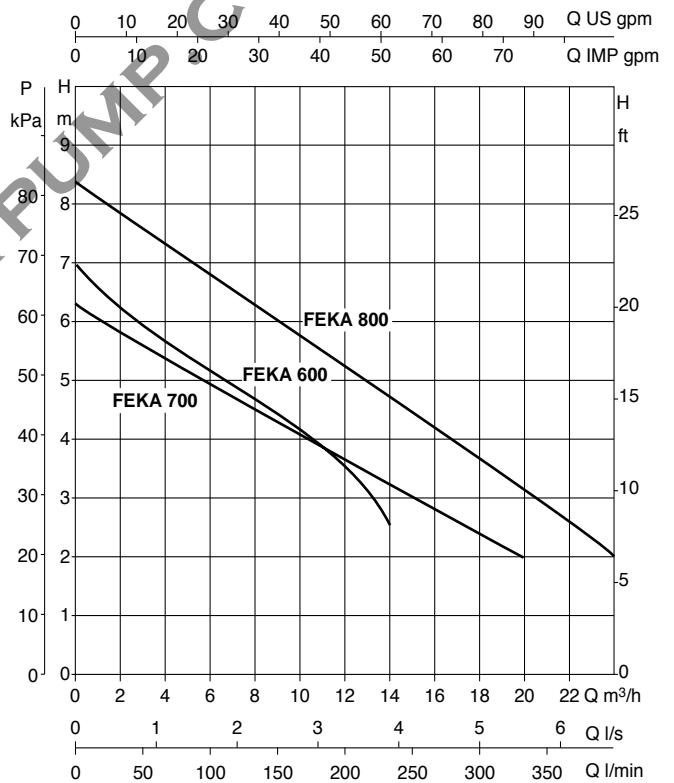
Pumped liquid: ground water, rain water, clear waste water, black waste water and water from rivers and lakes.

DIMENSIONS AND WEIGHTS

Weight without pump: 41 kg



HYDRAULIC DATA



PUMP SELECTION/CONTROL PANEL

MODEL	P2 NOMINAL		CONTROL PANEL SINGLE-PHASE 230V~ 50 Hz	CONTROL PANEL THREE-PHASE 400V~ 50 Hz
	kW	HP		
2FEKA 600 N.A.	0,55	0,75	E2D 2,6 M	E2D 2 T
2FEKA 700 N.A.	0,6	0,8	E2D 2,6 M	E2D 2 T
2FEKA 800 N.A.	0,75	1	E2D 2,6 M	E2D 3 T