

# FEKA 900

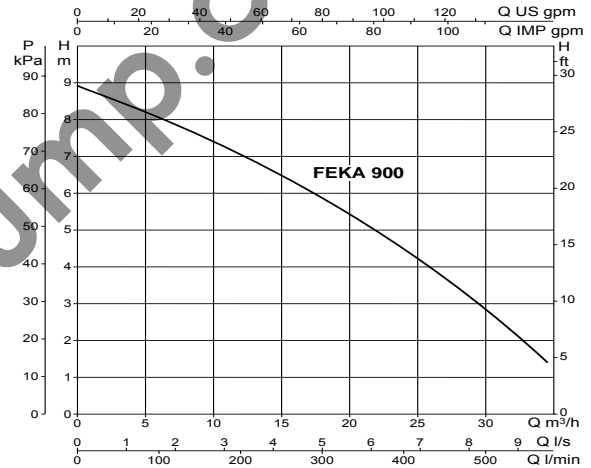
## STAINLESS STEEL SUBMERSIBLE PUMP



Pump body, seal holder cover, filter and filter cover, motor casing, outer casing with handle, cable compartment cover in **AISI 304 stainless steel**.  
 Driving shaft in **AISI 316 stainless steel**. **Vortex back flowing impeller in micro cast AISI 304 steel**. Handle coated with insulating rubber.  
**Double mechanical seal** with oil chamber interposed, carbon/alumina on motor side and silicon/silicon carbide on pump side.  
**Dry motor**, asynchronous, watertight, cooled by the pumped liquid itself.  
 Standard thermal protection in the winding.  
 Capacitor permanently on in the single-phase version.  
 10 metres of H07RN-F power cables with electric plug are supplied as a standard feature. All models can be supplied either with or without float.

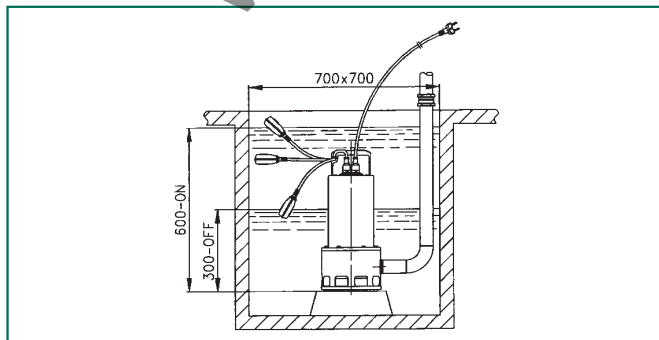
**Operating range:** from 3 to 35 m<sup>3</sup>/h with head up to 9 metres  
**Liquid temperature range:** from 0°C to +50°C  
 from 0°C to +35°C for domestic use  
**Pumped liquid characteristics:** sewage water and waste water in general, not aggressive.  
**Maximum working temperature:** + 40°C with the motor out of the water  
**Free passage of solids:** 50 mm  
**Maximum immersion depth:** 10 metres  
**Protection level:** IP 68  
**Insulation class:** F  
**Installation:** fixed or portable, in a vertical position

### ELECTRICAL AND HYDRAULIC DATA

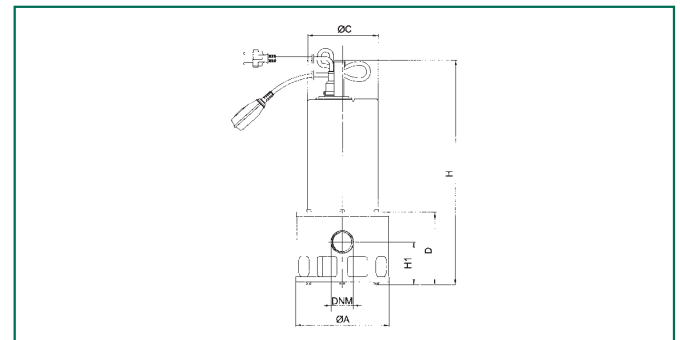


MODEL	ELECTRICAL DATA					HYDRAULIC DATA										
	VOLTAGE 50 Hz	P1 MAX kW	P2 NOMINAL kW HP		I <sub>n</sub> A	CAPACITOR μF Vc		Q m <sup>3</sup> /h	0	3	6	12	18	24	30	35
FEKA 900 M	1x220-240 V~	1,39	1	1,36	6,2	25	450	H	9	8,5	8,1	7	5,9	4,6	2,8	1,4
FEKA 900 T	3x400 V~	1,38	1	1,36	2,5	-	-									

### INSTALLATION



### DIMENSIONS AND WEIGHTS



MODEL	A	C	D	H	H1	DNM	PACKAGING DIMENSIONS			VOLUME m <sup>3</sup>	WEIGHT Kg
							L/A	L/B	H		
FEKA 900	219	166	185	575	105	2" F	248	279	612	0,042	17,5