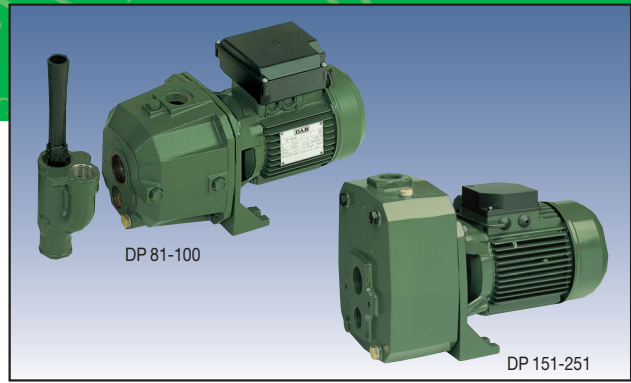


DP FOR DEEP SUCTION



Self-priming centrifugal pump for suction up to 27 metres, reached by means of an ejector. Cast iron pump body and motor support. Technopolymer impeller and diffusers. Stainless steel adjustment rings. Carbon/ceramic mechanical seal. Cast iron ejector body, technopolymer Venturi tube and brass nozzle. Asynchronous motor closed and cooled by external ventilation. Built-in thermal and current overload protection and a capacitor permanently on in the single-phase version. For the protection of the three-phase motor it is advisable to use a suitable overload protection complying with the regulations in force.



Operating range: from 0.15 to 4.3 m³/h
Liquid temperature range: from 0°C to +40°C for other uses
 from 0°C to +35°C for domestic use
Pumped liquid characteristics: clean, free from solids or abrasive substances, not viscous, not aggressive, not crystallised and chemically neutral.
Maximum ambient temperature: +40°C
Maximum working pressure: 6 bar (600 kPa) for DP 80 - DP 100
 8 bar (800 kPa) for DP 151 - DP 251
Protection level: IP 44
Insulation class: F

ELECTRICAL DATA

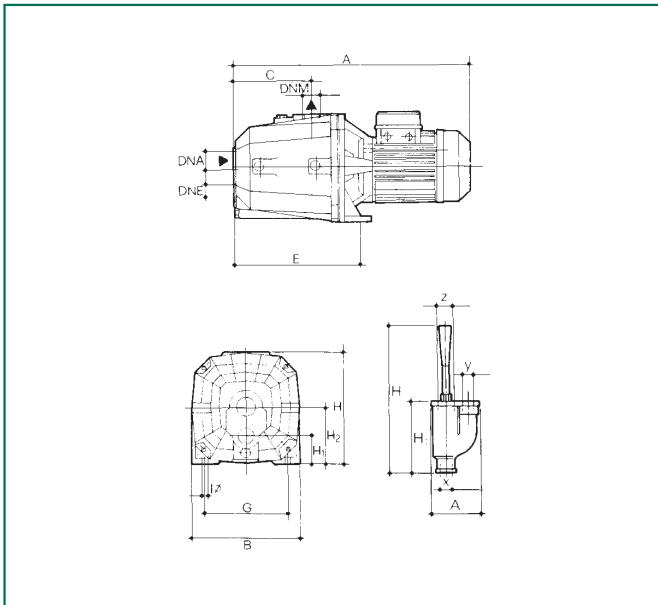
MODEL	ELECTRICAL DATA					
	VOLTAGE 50 Hz	P1 MAX kW	P2 NOMINAL kW	HP	In A	CAPACITOR µF Vc
DP 81 M	1x220-240 V ~	0,69	0,44	0,6	3,2	12,5 450
DP 81 T	3x230-400 V ~	0,66	0,44	0,6	2,6-1,5	- -
DP 100 M	1x220-240 V ~	0,79	0,75	1	3,8	16 450
DP 100 T	3x230-400 V ~	0,64	0,75	1	2,6-1,5	- -
DP 151 M	1x220-240 V ~	1,56	1,1	1,5	7	31,5 450
DP 151 T	3x230-400 V ~	1,45	1,1	1,5	4,7-2,7	- -
DP 251 M	1x220-240 V ~	-	1,85	2,5	8,3	40 450
DP 251 T	3x230-400 V ~	-	1,85	2,5	5,6-3,2	- -

Performance range

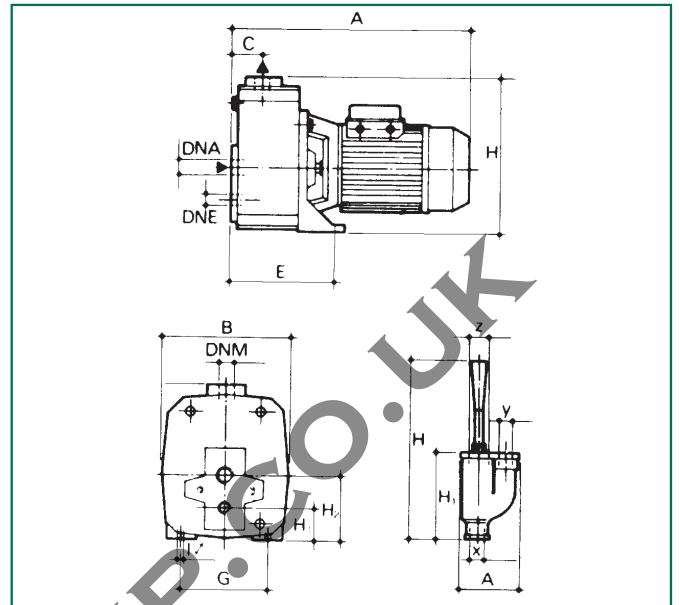
		HYDRAULIC DATA (n = 2800 r.p.m.)														
PUMP TYPE	EJECTOR TYPE	SUCTION DEPTH	Delivery pressure in bar													
			1,5	2	2,5	3	3,5	4	4,5	5	5,5	6	6,5	7		
			Capacity table in l/h													
DP 81	E 25	9	2140	1410	730	-	-	-	-	-	-	-	-	-	-	-
		12	1730	1000	400	-	-	-	-	-	-	-	-	-	-	-
		15	1220	580	-	-	-	-	-	-	-	-	-	-	-	-
	E 30	9	1790	1340	950	620	360	-	-	-	-	-	-	-	-	-
		12	1500	1100	740	460	250	-	-	-	-	-	-	-	-	-
		15	1260	880	570	320	-	-	-	-	-	-	-	-	-	-
DP 100	E 25	9	2580	1870	1120	470	-	-	-	-	-	-	-	-	-	
		12	1990	1400	720	-	-	-	-	-	-	-	-	-	-	
		15	1400	950	380	-	-	-	-	-	-	-	-	-	-	
	E 30	12	1770	1350	980	650	400	-	-	-	-	-	-	-	-	
		15	1500	1120	775	500	280	-	-	-	-	-	-	-	-	
		18	1260	910	600	350	150	-	-	-	-	-	-	-	-	
DP 151	E 20	9	-	-	-	3470	2890	2220	1500	750	-	-	-	-	-	
		12	-	-	-	3110	2510	1850	1100	300	-	-	-	-		
		15	-	-	-	2710	2100	1380	640	-	-	-	-	-		
		18	-	-	-	2360	1700	950	-	-	-	-	-	-		
	E 25	15	-	-	-	2800	2330	1830	1350	900	520	-	-	-		
		18	-	-	-	2530	2050	1550	1090	680	300	-	-	-		
DP 251	E 20	21	-	-	-	1820	1650	1410	1160	910	700	520	-	-		
		24	-	-	-	1680	1520	1260	1020	780	580	420	-	-		
		27	-	-	-	1550	1360	1110	880	680	490	330	-	-		
		9	-	-	-	4300	3600	2900	2180	1400	640	-	-	-		
	E 25	12	-	-	-	3750	3140	2540	1700	940	-	-	-	-		
		15	-	-	-	-	2780	2040	1300	500	-	-	-	-		
18		-	-	-	-	2340	1610	820	-	-	-	-	-			
15		-	-	-	-	2920	2400	1900	1400	950	570	-	-			
E 30	18	-	-	-	-	2600	2110	1620	1150	720	360	-	-			
	21	-	-	-	-	2350	1850	1350	900	510	-	-	-			
	24	-	-	-	-	2050	1550	1080	660	300	-	-	-			
	21	-	-	-	-	-	1710	1480	1220	980	770	590	420			
E 30	24	-	-	-	-	-	1580	1330	1080	850	670	490	330			
	27	-	-	-	-	-	1440	1200	950	750	560	400	250			

DIMENSIONS AND WEIGHTS

DP 81-100

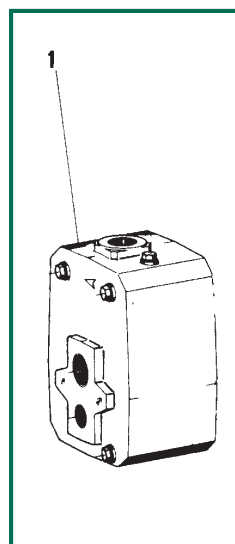
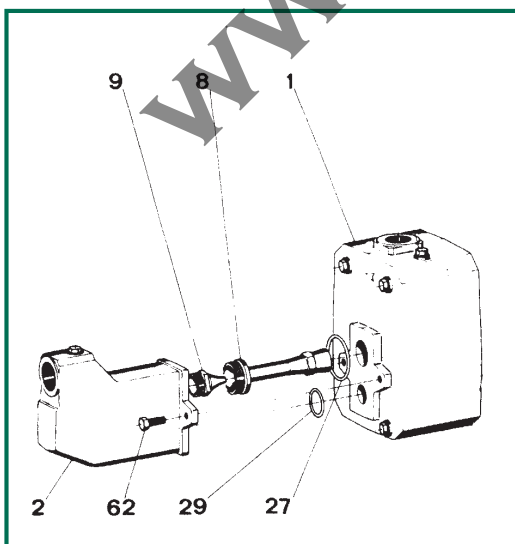


DP 151-251 Convertible



MODEL	A	B	C	E	G	I Ø	H	H1	H2	DNA	DNM	DNE	EJECTOR						WEIGHT Kg
													A	H	H1	x	y	z	
DP 81	385	180	90	202	140	9,5	225	47	92	1 1/4" G	1" G	1" G	97	295	143	1" G	1" G	1 1/4" G	13
DP 100	385	180	90	202	140	9,5	225	47	92	1 1/4" G	1" G	1" G	97	295	143	1" G	1" G	1 1/4" G	15,7
DP 151	388	210	50	197	145	11	155	52	108	1 1/4" G	1" G	1" G	97	295	143	1" G	1" G	1 1/4" G	28
DP 251 M	462	210	50	197	145	11	155	53	108	1 1/4" G	1" G	1" G	97	295	143	1" G	1" G	1 1/4" G	32,5
DP 251 T	388	210	50	197	145	11	155	53	108	1 1/4" G	1" G	1" G	97	295	143	1" G	1" G	1 1/4" G	27,9

INSTRUCTION FOR CONVERSION



Conversion from DP 151-251 to JET 151-251
Screw the nozzle (9) into place on the ejector's body (2) and the Venturi tube (8). Put the O-rings (27) and (29) in their respective places and fix the ejector body (2) to the pump body (1) using the two screws (62).

Conversion from JET 151-251 to DP 151-251
Loosen and remove the two screws (62) connecting the ejector body (2) to the pump body (1). Save the O-rings (27) and (29), the Venturi tube (8) and the nozzle (9).