



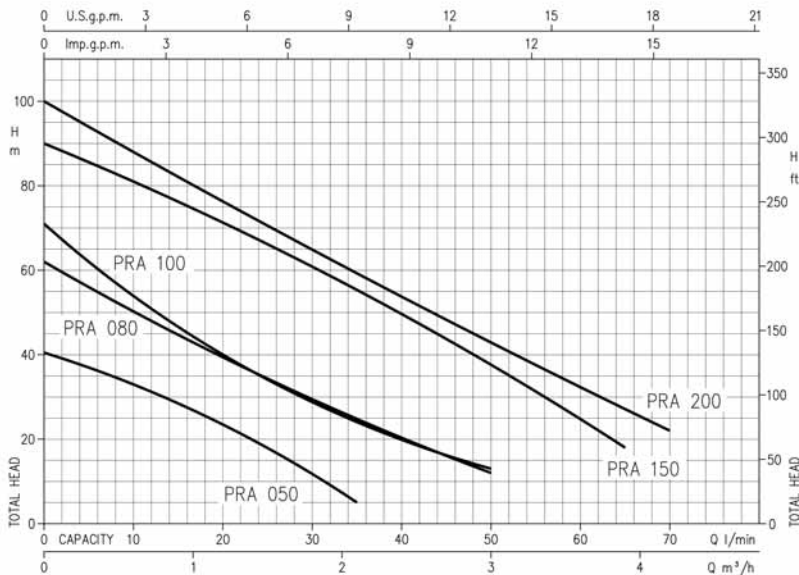
EBARA

PRA

ELETTROPOMPE PERIFERICHE

PERIPHERAL TURBINE PUMP





Elevate pressioni in rapporto alla portata e alla modesta potenza installata - per uso domestico, alimentazione caldaie a pressione, gruppi autoclave. Corpo pompa in ghisa - albero in C10 per modello PRA 0.50, AISI 303 per il resto della gamma - girante in ottone stampato - tenuta meccanica in ceramica/carbone/NBR - motore chiuso autoventilato, protezione IP 44, avvolgimento in classe F - condensatore permanentemente inserito. Temperatura acqua max 80° C

Electropumps getting high lifts with limited installed power - suitable for domestic use, booster plants, pressure boilers feeding.

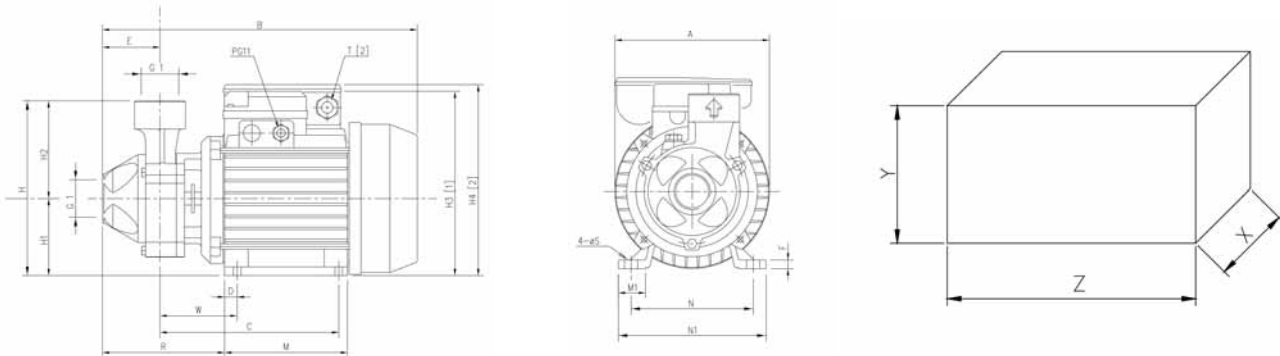
Cast iron pump body - shaft in C10 for PRA 0.50 version AISI 303 for the other models - brass impeller - mechanical seal in ceramic/carbon/NBR - T.E.F.C. motor - IP 44 protection - F class winding - capacitor permanently on.

Max water temperature 80° C

Elettropompa tipo Pump type	Motore Motor		Q portata - Q capacity								
			l/min	5	10	15	20	35	50	65	70
			m³/h	0.3	0.6	0.9	1.2	2.1	3.0	3.9	4.2
	HP	kW	H - prevalenza manometrica totale in m.c.a. H - total manometric head in meters								
PRA 050 M / PRA 050 T PRN 050 M*	0.5	0.37	37	33.3	28.7	23.7	5	-	-	-	
PRA 080 M / PRA 080 T	0.8	0.59	56	50.7	45.1	39.8	25	12	-	-	
PRA 100 M / PRA 100 T	1	0.75	62	54.4	47	40.4	24.3	13	-	-	
PRA 150 M / PRA 150 T	1.5	1.1	-	81	76.9	71.9	55.8	37.9	18	-	
PRA 200 M / PRA 200 T	2	1.5	-	88	82.9	77	59.8	43.3	27.4	22	

* PRN 0.50 M* - Nichelata / nickel-plated

Tutte le curve di prestazione sono calcolate secondo ISO 9906 Annex A Tolerances according to ISO 9906 Annex A



Modelli Type pumps	Dimensioni / Dimensions mm																	Imballo / Packing [mm]			Peso / Weight [mm]			
	A	B	C	D	E	F	H	H1	H2	H3	H4	M	M1	N	N1	R	T	W	S	X	Y	Z	Monof. Single phase	Trifase Three phase
PRA 050 M	130	263.5	148.5	10	50	7	143	63	80	-	160	100	23	100	120	118.5	PG11	69	7	285	165	145	5.6	5.6
PRA 050 T	130	263.5	148.5	10	50	7	143	63	80	149.5	-	100	23	100	120	118.5	-	69	7	285	165	145	5.6	5.6
PRA 080 M	130	290.5	159.3	11	53.8	9	161	71	90	-	178	112	25	112	135	122	PG11	69	7	310	195	165	9.2	9.2
PRA 080 T	150	290.5	159.3	11	53.8	9	161	71	90	167.5	-	112	25	112	135	122	-	69	7	310	195	165	9.2	9.2
PRA 100 M	150	290.5	159.3	11	53.8	9	161	71	90	-	178	112	25	112	135	122	PG11	69	7	310	95	165	9.7	9.7
PRA 100 T	150	290.5	159.3	11	53.8	9	161	71	90	167.5	-	112	25	112	135	122	-	69	7	310	95	165	9.7	9.7
PRA 150 M	162	330.5	188	12	57	12	175	80	95	-	212	124	28	125	152	144	PG13.5	88	9	350	230	190	14.5	14.5
PRA 150 T	162	330.5	188	12	57	12	175	80	95	186.5	-	124	28	125	152	144	-	88	9	350	230	190	14.5	14.5
PRA 200 M	162	330.5	188	12	57	12	175	80	95	-	212	124	28	125	152	144	PG13.5	88	9	350	230	190	15.8	15.8
PRA 200 T	162	330.5	188	12	57	12	175	80	95	186.5	-	124	28	125	152	144	-	88	9	350	230	190	15.8	15.8

[1] = Solo per modello trifase / Only for model three phase

[2] = Solo per modello monofase / Only for model single phase

cod. 479705222 11/05

EBARA Pumps Europe S.p.A. si riserva il diritto di apportare senza preavviso le modifiche che riterrà opportune. / EBARA Pumps Europe S.p.A. reserves the right to make modification without prior notice.